



HOW-TO INSTRUCTIONS

FOR

EASY INSTALLATION OF

Ventilated Shelving Products

PRODUCT DESCRIPTION:

- Constructed of high-quality, cold-drawn bright basic steel wire.
- All steel and metal components are cleaned and primed before coating for a perfect bond.
- Hardware is made of high-impact plastic specially designed for easy installation.
- Shelving will withstand 75 lbs. per square foot with proper support placement and correct installation.

CUSTOMER SERVICE:

Greenfield Metal Products Co., Inc.
P.O. Box 26 • 436 Industrial Drive
Ellaville, Georgia 31806

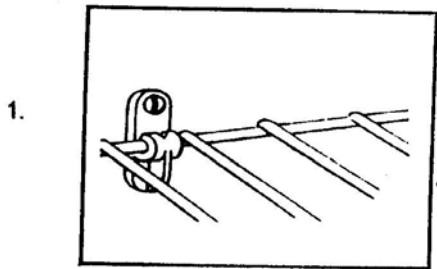
Toll Free: (800) 841-8065
FAX: (229) 937-2894

INSTALLATION INSTRUCTIONS

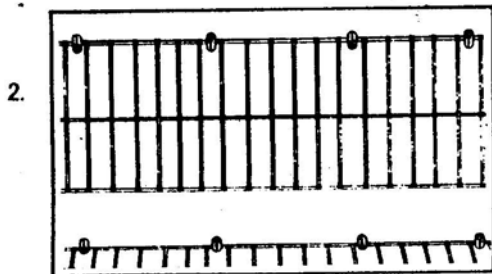
Greenfield Shelving is highly versatile and offers unlimited design potential while supplying the maximum in storage requirements efficiently and economically. The virtually maintenance-free vinyl coating never needs painting and is non-toxic. The design allows free flow of air, guards against dust build-up and resists mildew.

| | | |
|-----------------|------------------|----------------------|
| TOOLS REQUIRED: | Tape measure | Phillips screwdriver |
| | Drill | Level |
| | Drill bit (1/4") | Lead pencil |

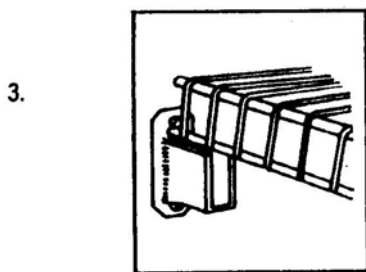
Please read carefully and thoroughly before installing!



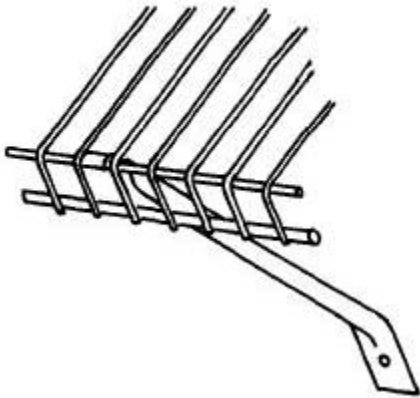
1. Establish shelf heights and mark a level line. Drill a hole for the mounting clips, **STARTING** at the left end of the marked line, 1' from the end, and every 12". Finish the end of the line with a hole. Insert the mounting clips into the holes and fasten with mounting screws.



2. Place the end caps on the shelving and snap shelving into the fastened mounting clips as shown.

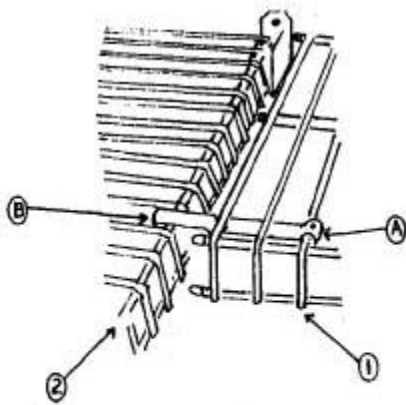


3. With the shelf level, mark the holes for the end brackets. Lift the shelf up against the wall and drill holes. Insert the anchors and fasten the end bracket to the wall with the mounting screws. Lower the shelf into the end bracket. Repeat with the other end of the shelf if installing the shelving "wall to wall".



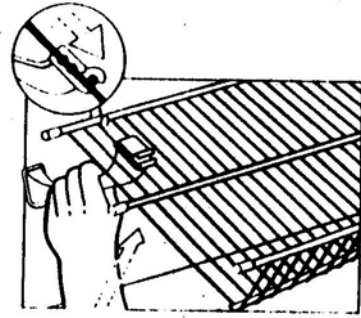
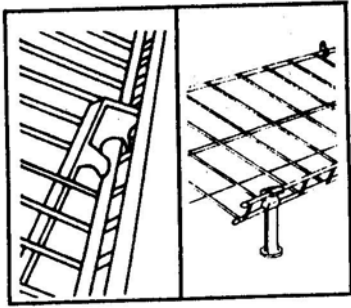
4. Insert support bracket from the underside of the shelf, with the curled lip turned **Down**. Insert curled lip between the two deck wires *with* lip attached to the top long rod on the front of the shelf. Lip should snap on the rod. Push the flat end of the bracket against the wall and mark for a hole. Move the bracket out of the way and drill hole. Insert anchor, move bracket back in place, and fasten to the wall with the mounting screw. Use one bracket for every 3 feet of shelving.

IT IS RECOMMENDED THAT U-CLAMPS BE USED IN PLACE OF MOUNTING CLIPS BEHIND THE SUPPORT CLIPS BEHIND THE SUPPORT BRACKET IN OPEN-END INSTALLATION.



5. TO INSTALL METAL CORNER BRACKET: Lift up the connecting shelf (1) slightly. Coming up under the lifted shelf, connect the short curled end of bracket (A) to the third wire of the connecting shelf. The first and second wires of the shelf will rest in the curve of the bracket. Lower the connecting shelf, placing the long curved end of the bracket (B) on the large wire of the installed shelf (2).

This installation is used to create an L -shaped or U -shaped closet.



An inverted shelf becomes a shoe rack

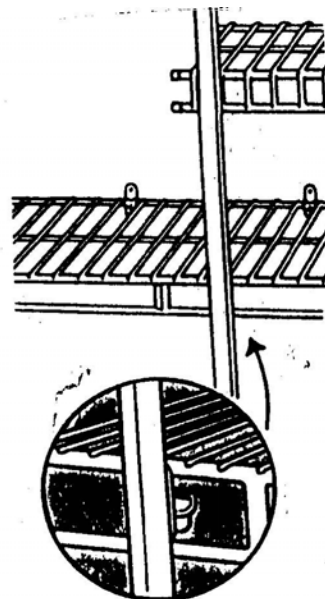
6. FLOOR MOUNTED SHELF:
 Measure and mark a level line 12" from the floor. Drill holes for the mounting clips starting at the left end of the marked line, 1" inch from the end. Drill additional holes approximately every 12" from the first hole. Finish to the end of the line with a hole. Insert mounting clips and fasten to the wall with screws. Put end caps on the shelf. Snap the shelf into the clips, making sure the front lip is pointed up. Install #8030 Shoe Rack Support Bracket as shown by snapping into place.

7. TIER SHELVES UP THE WALL:
 Install the initial shelf using the same method previously instructed in step 6. Use the #8109 Wall Shoe Support Bracket as illustrated above. Additional shelves can be installed up the wall approximately 12 – 14" apart using the same method.

8. TO INSTALL CLOSET POLES:

Additional tools needed: C-clamps
 1/8" drill bit

Apply pole caps to each end of pole. Install shelving as described in Step 1, Step 2, and if necessary, Step 3. Beginning with the top shelf, level installed shelf and place pole in desired positions, securing with C-clamp. Mark pole 3/4" up from the bottom rod of front tip of shelf. (The top wire of the lip must set in the "J" of the clip.) Repeat for all shelves and poles being installed. Mark each pole 'top' and "bottom" for your reference. Lie pole flat on the floor and drill all the marked holes with 1/8" drill bit. Fasten all the J-clips to the poles with #8x1/2" pole screw, making sure the "J" of the clip points towards the floor. To install pole to shelving, take one piece of shelf at a time, starting with the bottom shelf. Lift shelf up past level point and position pole in front of shelf. Place the top rod of the shelf in the clip and snap in. Repeat for each shelf.



INSTALLATION OF ACCESSORIES

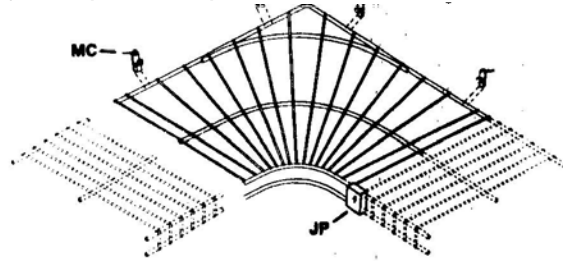
#9850 CORNER CONNECTOR HIGH BAR

(All installation hardware included)

TO INSTALL:

Establish shelf heights and mark level line. Measure 2" from corner; mark hole to be drill. Measure 16" from corner; mark hole to be drilled. Repeat with opposite wall. Drill holes with 1/4" drill. Insert mounting clips with anchor in holes and secure with mounting screws.

To install shelving: Establish shelf heights at same height as corner connector shelf. Mark level line. Drill holes for mounting clips as described on page one, figure one. Insert mounting clips into holes and fasten with mounting screws. Apply end caps to the end of shelf not being connected to corner connector shelf. Snap shelving into clip, making sure the shelf and corner connector shelf meet. Connect the shelves and corner connector shelf with joiner plates, placing one plate behind the junction of the two shelves and one plate in front. Secure the joiner plates in place with the bolt and nut.



ORGANIZER RACKS - ALL SIZES

(All hardware included)

TO INSTALL 2-TIER, 3-TIER AND 4-TIER RACK, 12" AND 18" WIDE:

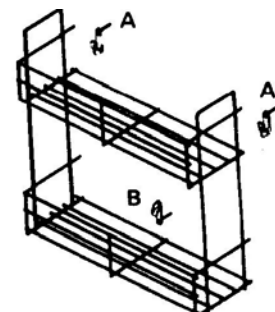
STEP 1. Attach two clips on top basket as shown in diagram, position A. Place in desired location and mark holes. Drill holes with 1/4 or 3/16" drill bit. Insert anchor, and fasten clip to wall with mounting screw.

NOTE: For installing on cabinet doors, shorter screw may need to be purchased.

STEP 2. Hang rack on clips. Place third clip on bottom baskets as shown in diagram, position B. Mark hole and drill. Insert anchor into hole and fasten clip with screw. On the 3-tier and 4-tier racks, extra hardware is included to be used for center shelf support if desired. Place clips on back of center shelf as described in STEP 1.

TO INSTALL 8-TIER RACK, 12" AND 18" WIDE:

Position rack in desired location. Follow STEP 1 of above directions, using clip in position A on the top and fourth baskets. Hang rack on clips. Place remaining clips on the sixth basket then follow directions in STEP 2 above.

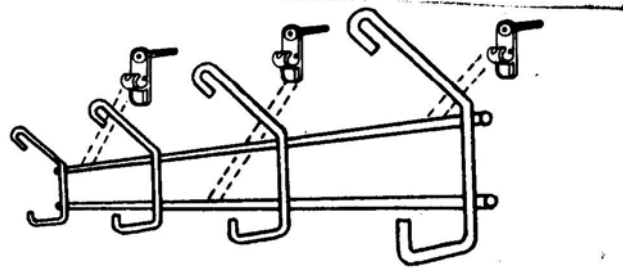


INSTALLATION OF ACCESSORIES

#9000 Utility Rack

(All installation hardware included)

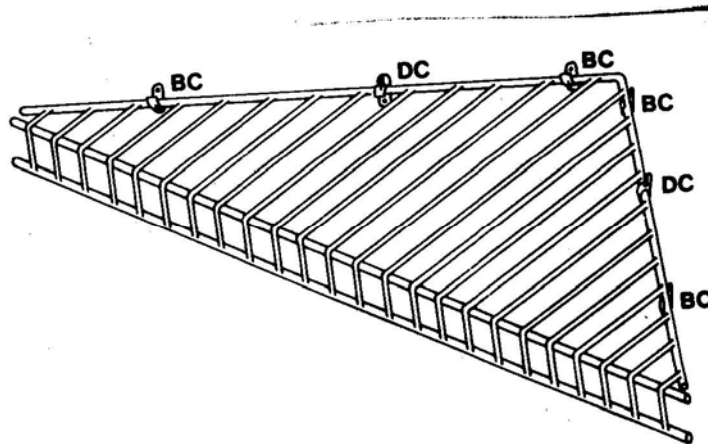
TO INSTALL: Establish desired height and position for utility rack. Mark level line. Mark hole for top clips approximately 2" from end of level line. Mark hole for bottom clip approximately 8" from end Drill holes with 1/4" drill; insert clips and fasten.



#9100 Corner Shelf

(All installation hardware Included)

TO INSTALL: Establish desired height and position for corner shelf. Mark level line. Measure 2-1/2" and 12-1/2" from the corner and mark the holes to be drill. Repeat with opposite wall. Drill with 1/4" drill bit. Insert mounting clip with anchor and fasten to wall with mounting screw. Snap down clips on to shelf, hole pointed to the floor, approximately 6-1/2" from corner point of shelf on each side. With down clips on shelf, snap shelf into mounting clips and mark holes to be drilled. Remove shelf, drill holes, and insert anchors. Replace shelf, and fasten down clips with screws.



INSTALLATION OF ACCESSORIES #3900W 21-PAIR SHOE RACK

TO INSTALL:

STEP 1: Attach two clips (one on each side) to the top wire as shown in Position A. Place in desired location, level, and mark holes. (Location of these holes will be a minimum of 67" from the floor and 22-3/4" wide.) Remove clips from wire, insert screws into clips and secure on marked locations. FOR INSTALLATION ON DRYWALL, MASONRY, OR HOLLOW CORE DOORS: drill 1/4" or 3/16" hole for anchor, insert anchor into hole and secure clip with screw.

STEP 2: Hang rack on clips; place two clips on fourth wire as shown in Position B and two Clips on bottom wire as shown in Position C. Repeat clip installation as described in Step 1. Hang shoe rack on the clips.

